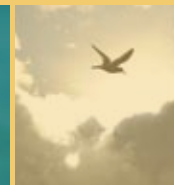




CENTER FOR
LIFE TRANSITIONS



EMBRACING change.



INSPIRING hope.

ENRICHING lives.



“Life is difficult.”*

Our life journey is continual change and development in matters of family, jobs, career, relationships, aging, and faith. Transitions can be difficult and disconcerting — often bringing feelings of isolation. Knowing where to turn for support, guidance and information is challenging.

Center for Life Transitions is a place, a program and a philosophy.

The philosophy that guides the Center is that all people deserve support and resources for deepening their “center,” faith, and sense of purpose while managing transition. Each person’s center is unique, personal and individually defined. The Center for Life Transitions exists to encourage people to draw on their center along with all their gifts in order to embrace change... find hope... and enrich their lives.

The book of Ecclesiastes says there’s a time and a season for everything, which means we’re always growing towards something new — and uncertain. As we face new seasons, there is opportunity to find new meaning, new success, and new joy in our lives.

Mission

The Center for Life Transitions is dedicated to supporting people at “crossroads” in their personal, professional and spiritual lives. We develop, deliver and support leading solutions, expertise, initiatives, and structure for transitions, which are integrated with opportunities for spiritual exploration, in the following life development areas:

- Career/Employment
- Aging/Retirement
- Family/ Relationships/Marriage

The Center brings together the best professional and spiritual resources. The Center:

- Supports the value of individuals and relationships
- Inspires each to move forward in meaningful transition and transformation
- Enables individuals to be heard, helped and healed
- Encourages the exploration of faith and spirituality as a significant resource for life transitions

We affirm the hope that a fragmented life can be made whole through a combination of faith, support, and inspired work.

“It’s sensational what direction can do.
The beauty of the human condition is
the magic people are capable of when
there’s direction.”

— Dan Burr



The Center works in two primary ways:

— ONE —

By developing and delivering:

- Confidential, individual counseling/ coaching services
- Group programs, workshops and retreats
- Web-based tools, resources and communities for life transitions

— TWO —

By collaborating with individuals and organizations through imaginative initiatives which help people in transition.

Individual and Group Services

The Center offers a variety of programs in both North Branch, New Jersey and Milwaukee, Wisconsin. These programs are also available through partnerships with sponsoring organizations throughout the country. Program offerings vary according to organizational need and can include:

- ♦ Conferences and retreats
- ♦ Seminar series
- ♦ Half or full day workshops
- ♦ Individual consulting, counseling, coaching
- ♦ Web-based workshops/courses

“What is behind us and what lies below us are tiny matters compared to what lies within us.”

—Emerson



Individual Counseling and Coaching

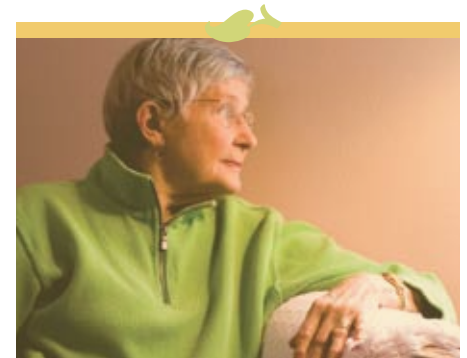
From time to time, individuals, couples, families and organizations may benefit from professional counseling or coaching. Counseling occurs in an environment that employs the use of traditional psychotherapy while coaching is a combination of counseling, advising and guidance which promotes successful decisions and goal accomplishment. In either case, exploring spirituality/faith is important in the healing or developmental process.

Counseling may be conducted by a licensed professional Center staff member or through referral to a Center-approved professional. In many instances, health insurance assists in the cost for these services. The Center may offer reduced fees/scholarships in certain situations.

Partnerships in Mission

The Center for Life Transitions desires to work with organizations and individuals to enhance and expand Center mission. Proposals of no more than two pages on ideas, programs, or processes for collaboration are encouraged. Matching, shared and creative funding are potential options. The Board of Directors meets regularly to review proposals.

The Center also supports partnerships with churches, synagogues, temples, places of worship and any organization for the purpose of providing customized services to individuals and groups at reduced costs.



The Center's Beginning

The idea of a Center which integrates counseling and career psychology, family therapy and spirituality in practical programs, services and resources was shared by the two founders when they first met in 1990. In 2002, Ethel Kienz approached them with a proposal to provide an endowment for the Center. She contributed to the incorporation process and served on the Board of Directors until her death in 2003. Ethel led several ministries for the elderly at North Branch Reformed Church in North Branch, New Jersey. The Center honors its primary benefactor by supporting outreach and education to the elderly as part of an overall mission.



“Therefore I believe you can fill the need for all the ministries you have listed, such as family assistance, career management, grief recovery, faith crisis, etc. and spread the work of the Center to other churches, other communities and even to other states.”

— *Ethel Kienz, May 2002*



The Center's administrative offices are in a circa 1787, pre-civil war house located on the banks of the North Branch of the Raritan River in Bridgewater, New Jersey. The building has been carefully maintained to reflect the enduring character of its age while providing comfortable, thoughtful space for the Center's programs, counseling and services. The grounds are conducive to outside meetings, personal reflection, and simply enjoying nature.

Founders

Thomas Bachhuber, Ed.D. 🍷 *President, Board of Directors*

Responsible for overall Center leadership, strategy and service delivery.

Tom's individual coaching/counseling, writing and workshops/retreats focus on career transition over the lifespan. He is presently Director of the Career Development Center at the University of Wisconsin-Milwaukee and also started the UWM Career Transitions Center for Milwaukee adults facing career change and job loss. His work with both universities and corporations has been extensive; providing training, research and recruitment strategies to Fortune 500 companies and career services/development consultation to 100 major universities throughout the country.

Tom was the tenured Director of the Career Development Center at the University of Maryland and Assistant Dean/Director at Coe College in Cedar Rapids, Iowa. Dr. Bachhuber's publications include *Directions: a Guide to Career Planning* (Houghton-Mifflin), *A Parents Guide to Helping their Children with Educational and Career Decisions* (Abbey Press) and *The Best Graduate Business Schools* (Macmillan/Simon Schuster).

Tom has served as an elder at North Branch Reformed Church in North Branch, New Jersey, designing and leading adult education and prayer initiatives. He also led workshops at New Brunswick Theological Seminary. Tom's Doctorate and Masters in Counseling are from the University of Virginia.

Scott Pontier, M.A., M.S.W. 🍷 *Vice President, Board of Directors*

Responsible for overall Center leadership, strategy and service delivery.

Scott Pontier is trained as psychotherapist and pastoral counselor, with much of his professional experience focused on organizations. Presently in private psychotherapy practice, he also consults with organizations on employee health and development issues. For many years, Scott was President and owner of an Employee Assistance Program (EAP) which developed and delivered counseling services to over 100 corporations. Scott has been a frequent workshop leader, keynote speaker and educator in a variety of settings.

Community involvement has included chairing the Somerset County (New Jersey) Mental Health Board and serving on the New Jersey Task Force on Compulsive Gambling, the Mental Health Association in Somerset County and the Commerce and Industry Association of New Jersey. Scott was member of U.S. Congressman Michael Pappas's Health Care Focus Group. He has also served as an Elder and Vice President of his church's governing board. Presently he serves on the Board of Interfaith Hospitality Network (IHN).

Mr. Pontier holds graduate degrees in Theology (M.A. Pastoral Counseling) and Clinical Social Work (M.S.W.) from New Brunswick Theological Seminary and Rutgers University. He is double licensed as a Marriage and Family Counselor and Clinical Social Worker.

Locations 🍷 Contacts

Website: www.centerforlifetransitions.net

E-mail: Info@centerforlifetransitions.net

Phone: 908-203-0088

NEW JERSEY

Administrative Offices

191 Church Road

Bridgewater, New Jersey 08807

WISCONSIN

2719 South Shore Drive

Milwaukee, Wisconsin 53207